



www.cqpinc.com

CUSTOM QUALITY PRODUCTS, INC.

*"We Build Doors That Last"*

(800)635-1086 • (513)541-1191 • FAX: (513)541-1192

## BLAST CELL DOORS COLD STORAGE / FOOD PROCESSING APPLICATION



INSULATED VINYL DOOR PANELS

### FEATURES:

- Nylon reinforced vinyl
- Special bubble foil insulation
- Hypalon seals at jamb side and bottom
- Overlap at leading edge
- Neoprene leading edge cord
- Vertical stiffeners at leading edge
- Steel pipe framework
- Compression style hinges
- Easy installation and low maintenance

Manual operated closure  
for loading blast cells.

Easy to install and  
maintain.

Low Cost

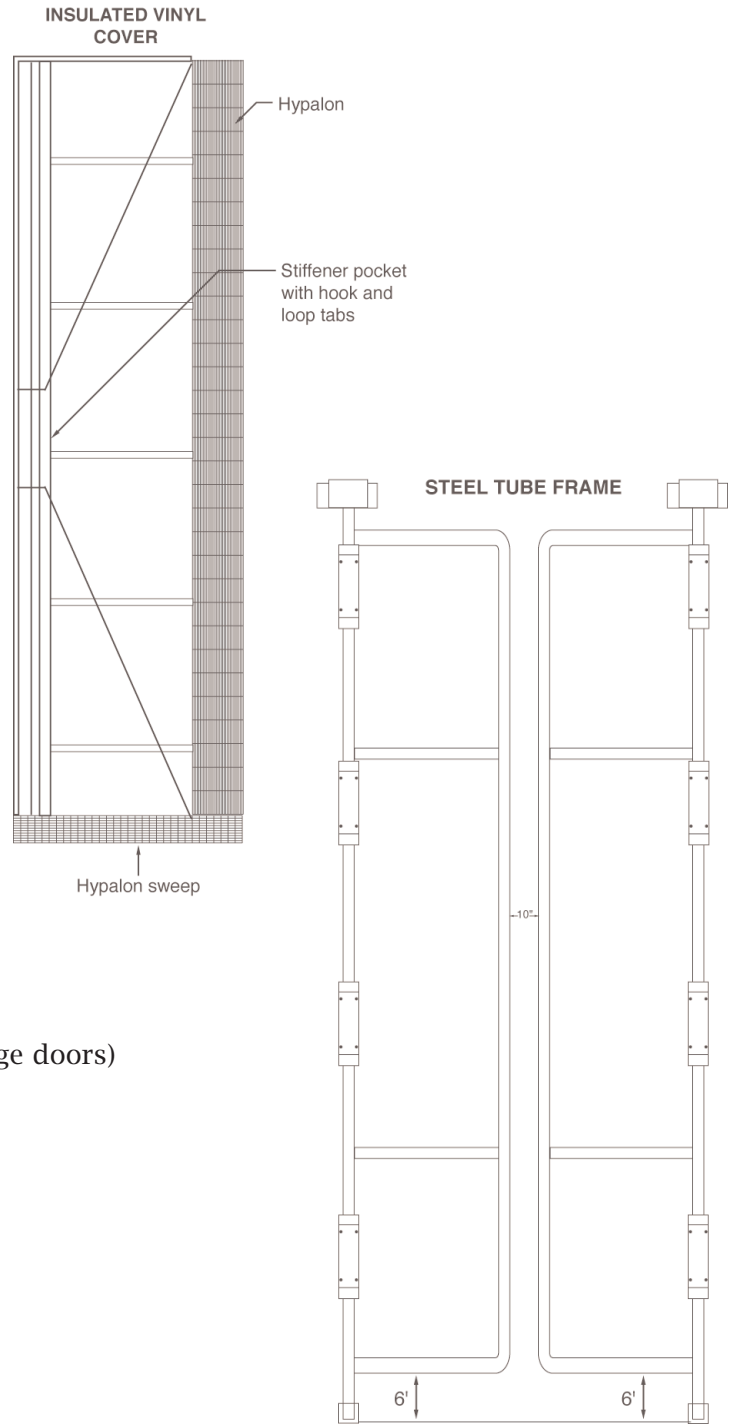
- *USDA* accepted

# Blast Cell Doors • COLD STORAGE / FOOD PROCESSING

## ARCHITECTURAL SPECIFICATIONS

Doors shall be manually operated blast cell doors as manufactured by Custom Quality Products, Inc. in Cincinnati, Ohio. Doors shall be constructed of hinged galvanized steel pipe frame work covered with 18 oz. reinforced vinyl and 1/4" special bubble foil insulation.

Frame for opening to be provided by others (minimum 6"x 6"x 1/4" steel tube).



To fit door opening size:  
 \_\_\_\_\_ width x \_\_\_\_\_ height

### OPTIONS:

Texture Sheet (Both Sides)

- Locking System
- Windows
- Insulated Curtain Walls
- Roller Casters (for large doors)
- Handles

Color:

- White
- Blue
- Other



**Model Blast Cell Traffic Doors are shipped FOB Factory**

Customer: \_\_\_\_\_

Approved by: \_\_\_\_\_ Date: \_\_\_\_\_

**CUSTOM QUALITY PRODUCTS, INC. • 1645 Blue Rock Street • Cincinnati, Ohio 45223**